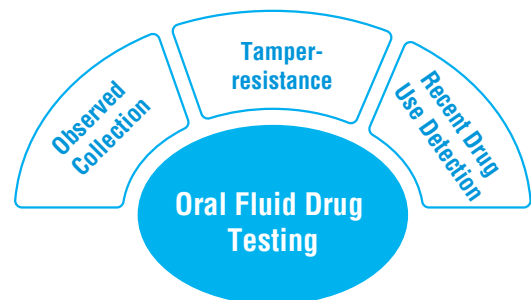


T-Square[®] Oral Fluid Drug Testing



Oral Fluid Drug Testing Benefits

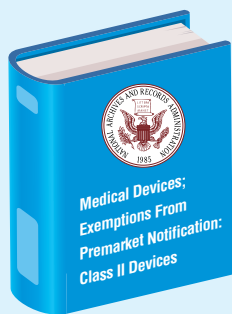
Oral Fluid Drug Testing offers a simple and convenient method to perform drug screening. 100% observation during collection allows the testing to be performed anytime and anywhere, which greatly reduces the specimen-tampered concerns. Because drugs take time to metabolize and pass through body system, oral fluid is also recognized as the best way to screen the recent drug use.



Employment & Insurance (E&I) Exemption



is the time to expand the application scenario of Oral Fluid Drug Testing to **Non-Federal Workplace and Insurance!**



The Food and Drug Administration (FDA or Agency) is announcing a list of class II devices that the Agency has determined based on established factors to no longer require premarket notification to provide reasonable assurance of safety and effectiveness, subject to certain limitations. FDA is publishing this notice of that determination in accordance with procedures established by the 21st Century Cures Act.

E&I exempt products can be legally used in Non-Federal Workplace and Insurance!

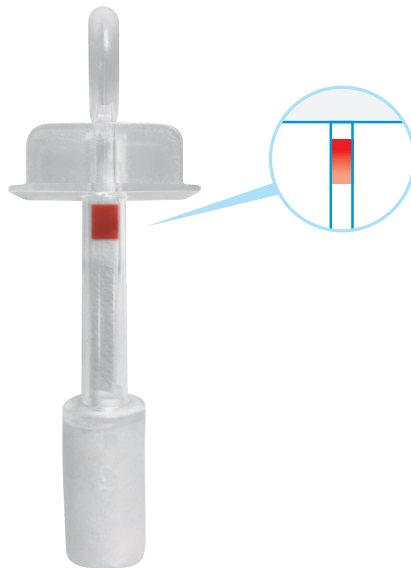
* The employment & Insurance (E&I) Exemption Notice by the Food and Drug Administration on 07/11/2017.

E&I Exempt Oral Fluid Drugs and Cutoffs

Drug	Cutoff
Barbiturates (BAR)	20 ng/mL
Methylenedioxy-methamphetamine (MDMA)	50 ng/mL
Marijuana (THC)	40 ng/mL
Amphetamine (AMP)	50 ng/mL
Cocaine (COC)	20 ng/mL

Drug	Cutoff
Methamphetamine (MET)	50 ng/mL
Opiate (OPI)	40 ng/mL
Oxycodone (OXY)	20 ng/mL
Methadone (MTD)	30 ng/mL
Phencyclidine (PCP)	10 ng/mL

T-Square[®] Oral Fluid Drug Test



- Optional Saliva Saturation Indicator
- Convenient Rapid Screening
- Collect & Test in One Step
- Test Up to 12 Drugs & Alcohol
- E&I Exempt Testing Panels
- Fast Results

For Forensic Use Only

ACL ACL ACL ACL ACL	Alcohol (ACL)	0.02g/dL
AMP AMP AMP AMP AMP	Amphetamine (AMP)	50ng/mL
BAR BAR BAR BAR BAR	Barbiturates (BAR)	60ng/mL
BZO BZO BZO BZO BZO	Benzodiazepines (BZO)	30ng/mL
BUP BUP BUP BUP BUP	Buprenorphine (BUP)	5ng/mL
COC COC COC COC COC	Cocaine (COC)	20ng/mL
THC THC THC THC THC	Cannabinoids (THC)	25ng/mL
EDDP EDDP EDDP EDDP EDDP	2-ethylidene-1,5-dimethyl-3,3-diphenylpyrrolidine (EDDP)	20ng/mL
FTY FTY FTY FTY FTY	Fentanyl (FTY)	30ng/mL

KET KET KET KET KET	Ketamine (KET)	100ng/mL
MTD MTD MTD MTD MTD	Methadone (MTD)	30ng/mL
MET MET MET MET MET	Methamphetamine (MET/mAMP)	50ng/mL
MDMA MDMA MDMA MDMA MDMA	Methylenedioxymethamphetamine (MDMA)	100ng/mL
OPI OPI OPI OPI OPI	Opiate (OPI)	40ng/mL
OXY OXY OXY OXY OXY	Oxycodone (OXY)	20ng/mL
PCP PCP PCP PCP PCP	Phencyclidine (PCP)	10ng/mL
K2 K2 K2 K2 K2	Synthetic Cannabisoids (K2)	5ng/mL

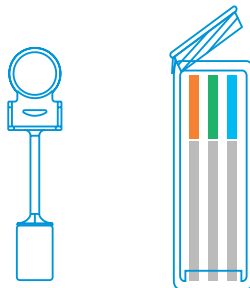
T-Square[®] Test Procedure



**Allow the kit and specimen to come to room temperature (65°F-86°F/18°C-30°C) prior to testing.
AVOID PLACING ANYTHING IN THE MOUTH 10 MINUTES PRIOR TO TESTING.**

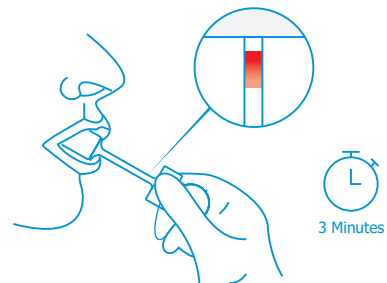
Step 1

Remove the test cube and the sponge collector from the foil pouch by tearing at the notch. Place the test cube upright on a level surface.



Step 2

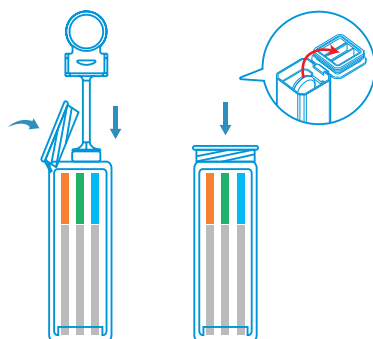
Put the sponge end of the collector on your tongue to collect oral fluid for about 7 minutes or 3 minutes if using the saturation indicator until the color on saturation indicator strip appears RED in the indicator window.



Step 3

Open the test cube and place the fully saturated sponge collector inside the test cube. Press the sponge collector down firmly until it reaches the bottom of the test cube, then close the cube lid tightly while compressing the collector. Keep test cube upright on flat surface and follow Step 4.

Note: Make sure the sponge collector is inserted vertically and the handle of collector is put into the clamp.



Step 4

1. Interpreting Alcohol Test Result:

Read result at 2 minutes. Do not read after 2 minutes.

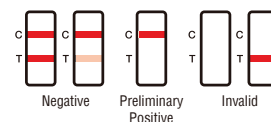
NEGATIVE: No color changes on reaction pad.

POSITIVE: Compare the color of reaction pad with provided color chart to estimate the approximate blood alcohol level.

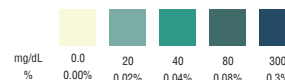
2. Interpreting Drug Test Results:

Read results at 5 minutes. Do not read after 5 minutes. A negative result will be shown by two color lines on the strip. The intensity of the line does not matter. A positive result will be shown by a single color line in the C section of the test strip. If there are no color lines present or a single color line in the T section of the test strip, the results are invalid, and the test should be repeated.

Drug Test Results



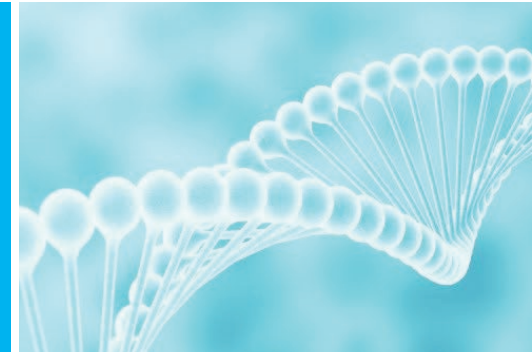
Blood Alcohol Concentration



NOTE: Results after more than 2 minutes may be not accurate

T-Square[®]

Order information



We are offering Oral Fluid Drug Testing products as below:

Item Code	Description	Complexity
QODOA-256	5-Panel T-Square; AMP, COC, MET, OPI, THC	Forensic Use Only
QODOA-2106	10-Panel T-Square; AMP,BUP,BZO,COC,MET,MTD,OPI,OXY,PCP,THC	Forensic Use Only
QODOA-5106	10-Panel T -Square; AMP, BAR,BUP,BZO,COC,MET,OPI,OXY,PCP,THC	Forensic Use Only
QODOA-3126-A	12-Panel T -Square; AMP, BAR, BUP, BZOC, OC, MET, MTD,OPI, OXY, PCP,THC+ALC	Forensic Use Only
QODOA-6126	12-Panel T-Square; AMP,BAR BUP, BZO, COC, MDMA, MET, MTD, OPI, OXY, PCP, THC	Forensic Use Only
QODOA-256EUO-I	5-Panel T-Square with indicator; AMP, COC, MET, OPI, THC	E&I Exempt
QODOA-266-I	6-Panel T-Square with indicator; AMP,BZO,COC,MET,OPI,THC	E&I Exempt
QODOA-666EUO-I	6-Panel T-Square with indicator; AMP,COC,MET,OPI,OXY,THC	E&I Exempt
QODOA-166EUO-I	6-Panel T-Square with indicator; AMP,COC,MET,OPI,PCP,THC	E&I Exempt
QODOA-2106-I	10-Panel T-Square with indicator; AMP,BUP,BZO,COC,MET,MTD,OPI,OXY,PCP,THC	E&I Exempt
QODOA-10106EUO-I	10-Panel T-Square with indicator; AMP,BAR,COC,MDMA,MET,MTD,OPI,OXY,PCP,THC	E&I Exempt

※ Customizable drug panels & Alcohol test are available.

25 Pcs/Box